

**THERMO
AIR[®]**

IE3 HIGH EFFICIENCY MOTORS

**TECHNICAL CATALOGUE
&
PRICE LIST 2017**



0.75kW – 90kW

IE3 MOTOR PRICE LIST 2017

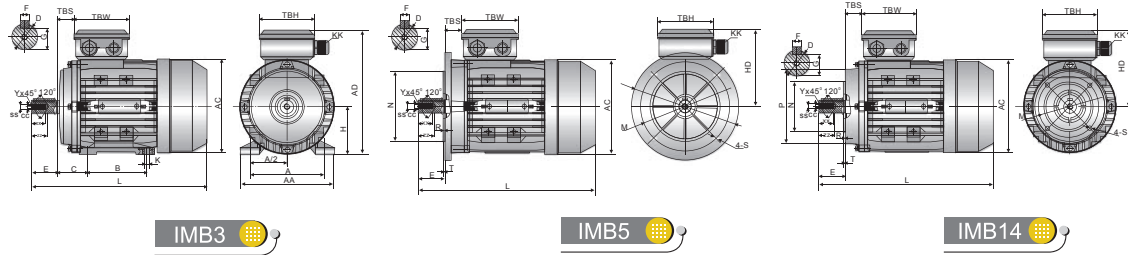
Item Reference	Rating	Pole	Efficiency Class	Frame	Mount type		Price
	kW						
0.7543TECAB3-IE3	0.75	4	IE3	80M	B3	Foot	€ 190.25
1.143TECAB3-IE3	1.1	4	IE3	90S	B3	Foot	€ 233.89
1.543TECAB3-IE3	1.5	4	IE3	90L	B3	Foot	€ 261.70
2.243TECAB3-IE3	2.2	4	IE3	100L	B3	Foot	€ 331.16
3.043TECAB3-IE3	3	4	IE3	100L	B3	Foot	€ 363.61
4.043TECAB3-IE3	4	4	IE3	112M	B3	Foot	€ 444.75
5.543TECAB3-IE3	5.5	4	IE3	132S	B3	Foot	€ 595.05
7.543TECAB3-IE3	7.5	4	IE3	132M	B3	Foot	€ 672.32
11.043TECCB3-IE3	11	4	IE3	160M	B3	Foot	€ 1,107.89
15.043TECCB3-IE3	15	4	IE3	160L	B3	Foot	€ 1,202.11
18.543TECCB3-IE3	18.5	4	IE3	180M	B3	Foot	€ 1,449.73
22.043TECCB3-IE3	22	4	IE3	180L	B3	Foot	€ 1,543.32
30.043TECCB3-IE3	30	4	IE3	200L	B3	Foot	€ 2,010.64
37.043TECCB3-IE3	37	4	IE3	225S	B3	Foot	€ 2,465.84
45.043TECCB3-IE3	45	4	IE3	225M	B3	Foot	€ 2,750.39
55.043TECCB3-IE3	55	4	IE3	250M	B3	Foot	€ 3,392.45
75.043TECCB3-IE3	75	4	IE3	280S	B3	Foot	€ 4,663.73
90.043TECCB3-IE3	90	4	IE3	280M	B3	Foot	€ 4,806.64
0.7523TECAB3-IE3	0.75	2	IE3	80M	B3	Foot	€ 177.05
1.123TECAB3-IE3	1.1	2	IE3	80M	B3	Foot	€ 198.43
1.523TECAB3-IE3	1.5	2	IE3	90S	B3	Foot	€ 245.93
2.223TECAB3-IE3	2.2	2	IE3	90L	B3	Foot	€ 269.64
3.023TECAB3-IE3	3	2	IE3	100L	B3	Foot	€ 363.61
4.023TECAB3-IE3	4	2	IE3	112M	B3	Foot	€ 448.84
5.523TECAB3-IE3	5.5	2	IE3	132S	B3	Foot	€ 595.05
7.523TECAB3-IE3	7.5	2	IE3	132S	B3	Foot	€ 651.86
11.023TECCB3-IE3	11	2	IE3	160M	B3	Foot	€ 1,049.02
15.023TECCB3-IE3	15	2	IE3	160M	B3	Foot	€ 1,160.66
18.523TECCB3-IE3	18.5	2	IE3	160L	B3	Foot	€ 1,255.93
22.023TECCB3-IE3	22	2	IE3	180M	B3	Foot	€ 1,510.68
30.023TECCB3-IE3	30	2	IE3	200L	B3	Foot	€ 2,002.41
37.023TECCB3-IE3	37	2	IE3	200L	B3	Foot	€ 2,205.70
45.023TECCB3-IE3	45	2	IE3	225M	B3	Foot	€ 2,872.18
55.023TECCB3-IE3	55	2	IE3	250M	B3	Foot	€ 3,571.30
75.023TECCB3-IE3	75	2	IE3	280S	B3	Foot	€ 4,400.43
90.023TECCB3-IE3	90	2	IE3	280M	B3	Foot	€ 5,034.39

Notes:

- 1) Prices Exclude VAT and delivery
- 2) Nationwide next day delivery on all motors, based on stock availability. Please contact sales team for confirmation of all stock items before order.
- 3) Motors are available in optional mounting arrangements – B5, B14a & B14b (flanged).
- 4) All IE3 motors are inverter controllable.
- 5) High temperature, tropical, epoxy coated and other bespoke motor options available.
- 6) For any additional information or queries please contact our sales team on (059) 913 1646 or sales@thermoair.com

IE3 MOTOR PRICE LIST 2017

Motor Dimensions, Mountings and Frame details



Overall & Installation Dimensions

B3

Frame	H	A	B	C	D	E	F	G	K	AA	AC	L	LccL*	KK	TBS	TBW	TBH	SS	XX	ZZ	CC	Y
56	56	90	71	36	φ9	20	3	7.2	5.8×8.8	110	φ117	196	232	1-M16×1.5	14	88	88	M3	9	12	2.5	0.5
63	63	100	80	40	φ11	23	4	8.5	7×10	120	φ130	220	258	1-M16×1.5	14	94	94	M4	10	14	3.3	0.8
71**	71	112	90	45	φ14	30	5	11	7×10	132	φ147	241(255)	282(296)	1-M20×1.5	20	94	94	M5	12	17	4.2	0.8
80	80	125	100	50	φ19	40	6	15.5	10×13	160	φ163	290	339	1-M20×1.5	27	105	105	M6	16	21	5	1
90 S	90	140	100	56	φ24	50	8	20	10×13	175	φ183	312	361	1-M20×1.5	30	105	105	M8	19	25	6.8	1
90L1/L2	90	140	125	56	φ24	50	8	20	10×13	175	φ183	337/367	386/416	1-M20×1.5	30	105	105	M8	19	25	6.8	1
100**	100	160	140	63	φ28	60	8	24	12×15	198	φ205	369(387)	425(443)	2-M20×1.5	26	105	105	M10	22	30	8.5	1.5
112	112	190	140	70	φ28	60	8	24	12×15	220	φ229	395	463	2-M25×1.5	32	112	112	M10	22	30	8.5	1.5
132S	132	216	140	89	φ38	80	10	33	12×15	252	φ265	437	497	2-M25×1.5	38	112	112	M12	28	37	10.2	1.5
132M/L	132	216	178	89	φ38	80	10	33	12×15	252	φ265	475/501	535/561	2-M25×1.5	38	112	112	M12	28	37	10.2	1.5
160M/L	160	254	210/254	108	φ42	110	12	37	15×19	290	φ325	640	697	2-M32×1.5	64	143	143	M13	36	45	14.2	2
180M/L	180	279	241/279	121	φ48	110	14	42.5	15×25	340	φ368	730		2-M32×1.5	73	190	190	M14	36	45	14.2	2
200L	200	318	305	133	φ55	110	16	49	19×29	390	φ368	745		2-M40×1.5	85	190	190	M15	42	53	17.5	2

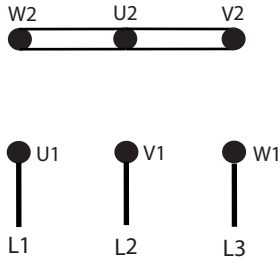
B5 Overall & Installation Dimensions

Frame	B5					B5R					D	E	F	G	KK	AC	HD	L	LccL*	TBS	TBW	TBH	SS	XX	ZZ	CC	Y		
	M	N	P	T	R	S	M	N	P	T																		R	S
56	φ100	φ80	φ120	3.0	0	φ7						φ9	20	3	7.2	1-M16×1.5	φ117	100	196	232	14	88	88	M3	9	12	2.5	0.5	
63	φ115	φ95	φ140	3.0	0	φ10						φ11	23	4	8.5	1-M16×1.5	φ130	108	220	258	14	94	94	M4	10	14	3.3	0.8	
71**	φ130	φ110	φ160	3.5	0	φ10	φ115	φ95	φ140	3.5	0	φ10	φ14	30	5	11	1-M20×1.5	φ147	115	241(255)	282(296)	20	94	94	M5	12	17	4.2	0.8
80	φ165	φ130	φ200	3.5	0	φ12	φ130	φ110	φ160	3.5	0	φ10	φ19	40	6	15.5	1-M20×1.5	φ163	133	290	339	27	105	105	M6	16	21	5	1
90 S	φ165	φ130	φ200	3.5	0	φ12	φ130	φ110	φ160	3.5	0	φ10	φ24	50	8	20	1-M20×1.5	φ183	139	312	361	30	105	105	M8	19	25	6.8	1
90L1/L2	φ165	φ130	φ200	3.5	0	φ12	φ130	φ110	φ160	3.5	0	φ10	φ24	50	8	20	1-M20×1.5	φ183	139	337/367	386/416	30	105	105	M8	19	25	6.8	1
100*	φ215	φ180	φ250	4.0	0	φ15	φ165	φ130	φ200	4.0	0	φ12	φ28	60	8	24	2-M20×1.5	φ205	152	369(387)	425(443)	26	105	105	M10	22	30	8.5	1.5
112	φ215	φ180	φ250	4.0	0	φ15	φ165	φ130	φ200	4.0	0	φ12	φ28	60	8	24	2-M25×1.5	φ229	167	395	463	32	112	112	M10	22	30	8.5	1.5
132S	φ265	φ230	φ300	4.0	0	φ15	φ215	φ180	φ250	4.0	0	φ15	φ38	80	10	33	2-M25×1.5	φ265	186	437	497	38	112	112	M12	28	37	10.2	1.5
132M/L	φ265	φ230	φ300	4.0	0	φ15	φ215	φ180	φ250	4.0	0	φ15	φ38	80	10	33	2-M25×1.5	φ265	186	475/501	535/561	38	112	112	M12	28	37	10.2	1.5
160M/L	φ300	φ250	φ350	5.0	0	φ19						φ42	110	12	37	2-M32×1.5	φ325	224	640	697	64	143	143	M13	36	45	14.2	2	
180M/L	φ300	φ250	φ350	5.0	0	φ19						φ48	110	14	42.5	2-M32×1.5	φ368	260	730		73	190	190	M14	36	45	14.2	2	
200L	φ350	φ300	φ400	5.0	0	φ19						φ55	110	16	49	2-M40×1.5	φ368	260	745		85	190	190	M15	42	53	17.5	2	

TEC Motor Wiring Diagram

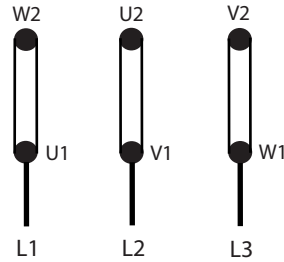
MS Three Phase Motors

Star Connection 



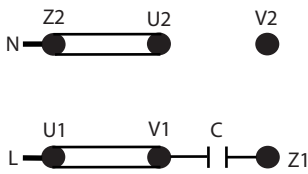
Connect links as shown below


Delta Connection 

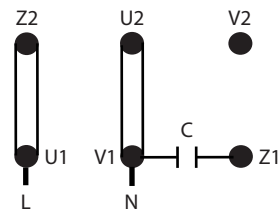


MY Single Phase - Perm Cap

Clockwise Rotation 

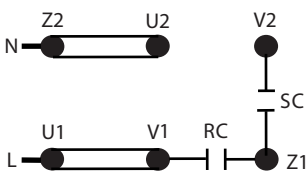


Anti Clockwise Rotation 



ML Single Phase - Cap Start / Cap Run

Clockwise Rotation 



Anti Clockwise Rotation 